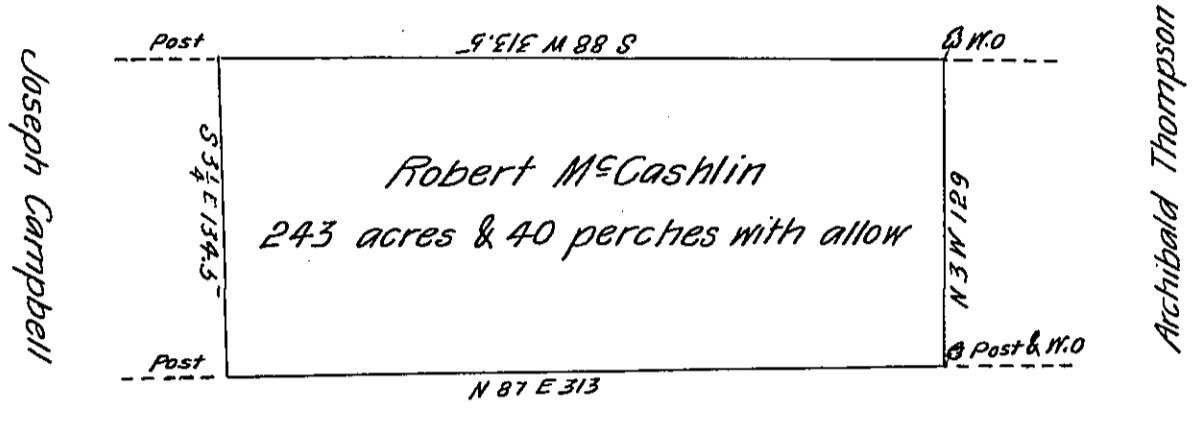


Donation land in 3<sup>rd</sup> Donation District



Beaver County Line

Situate in Mercer County Neshanoch township on the Waters of  
 Shenango.- Containing three hundred and forty three acres and forty perches  
 with allowance of Six per cent for Roads &c<sup>o</sup>. Surveyed Jany 20<sup>th</sup> 1836 for  
 Robert Mc Cashlin in pursuance of his improvement and actual Residence thereon  
 by me.

John Findley D.S.

To Jacob Spangler Esq<sup>r</sup>  
 Surveyor General

IN TESTIMONY that the above is a copy of the original remaining on file in  
 the Department of Internal Affairs of Pennsylvania, made  
 conformably to an Act of Assembly approved the 16th day of  
 February, 1833, I have hereunto set my Hand and caused  
 the Seal of said Department to be affixed at Harrisburg,  
 this twenty second day of January 1906.

*Isaac R. Brown*  
 Secretary of Internal Affairs.